



SEQUOIA
Ecological Consulting, Inc.

A wide-angle landscape photograph showing a river with white-water rapids flowing through a dense forest of evergreen trees. In the background, rugged mountains with patches of snow are visible under a cloudy sky. A person is standing on the rocky bank on the left side of the river.

STATEMENT OF QUALIFICATIONS



ABOUT SEQUOIA

Founded in 2011, **Sequoia Ecological Consulting, Inc. (Sequoia)** is a San Francisco Bay Area-based, disadvantaged small business that provides environmental consulting services to public agencies, utilities, construction firms, infrastructure developers, environmental and engineering firms, and private clients throughout California. Sequoia employs a staff of 35, including 4 registered professionals, who are based in our Contra Costa, San Diego, and Sacramento County offices.

As a biological specialty firm, Sequoia regularly consults with state and federal agencies for Endangered Species Act compliance and conducts field studies for permit applications and site assessments. We help our clients minimize project impacts on biological resources, and support them through permit applications, monitoring, and annual reporting to satisfy the requirements of varied complex permits. We apply our experiential knowledge early in the project design process to anticipate issues and avoid costly escalations in permitting, documentation, and monitoring requirements.

Sequoia's team includes wildlife biologists, botanists, construction monitors, restoration specialists, herpetologists, storm water inspectors, permitting specialists, and aquatic biologists – all of whom are experienced in the evaluation of biological resources at all levels. Our staff are well-versed in the intricacies of Federal, State, and local codes and regulations including the Clean Water Act, the Fish and Game Code, Federal and State Endangered Species Acts, the National Environmental Protection Act, the California Environmental Quality Act, multiple Species Conservation Programs, Habitat Conservation Plans, and Natural Community Conservation Plans.

Services

- Biological Services
- Environmental Planning and Regulatory Compliance
- Mitigation and Conservation
- Habitat Restoration
- Geographic Information Systems (GIS)
- Storm Water Services

Markets Served

- Wildfire Hazard Mitigation
- Water/Hydroelectric
- Utilities
- Mining and Natural Resources
- Mitigation Planning and Conservation Banking
- Conservation, Parks, and Open Space
- Transportation and Infrastructure
- Municipal
- Construction



CERTIFICATIONS

Sequoia is a certified Disadvantaged Business Enterprise (**DBE**), Small/Micro Business Enterprise (**SBE/MBE**), Woman-owned Business (**WBE**), and Woman-owned Small Business (**WOSB**).



WBE	CPUC WBENC	#11110228 #2005127466
DBE	CUCP/CA DoT	#40492
Small/Micro Business	CA DGS	#1790596
WOSB & EDWOSB	Federal	
Gold Shovel Standard	PG&E	
A Grade with All Clients	ISNetwork Approved	



Sequoia holds **GSA Contract No. 47QRAA18D0024** for Special Item Number (SIN) 899 1 – Environmental Consulting Services.

GSA Contract No.	47QRAA18D0024
GSA Schedule	00CORP
SIN No.	8991
Primary NAICS	541620

Please contact us at gsa@sequoiaeco.com to learn more about Sequoia’s GSA contract services or to request a quote.

SEQUOIA SERVICES



Biological Services

Sequoia provides integrated biological, permitting, and project management assistance, effectively supporting projects from the planning phase through the mitigation monitoring phase. Our biological services include:

Construction Compliance and Biological Monitoring

- Environmental training
- Pre-construction surveys
- Daily monitoring and reporting
- Long-term mitigation monitoring

Botany

- Listed and sensitive plant surveys
- Vegetation mapping
- Focused surveys and California Native Plant Society protocol botanical surveys

Fisheries

- Electrofishing surveys
- Fish relocations and rescues
- Seining/netting
- Snorkel surveys
- Salmonid habitat assessments
- Redd counts



Biological Services - continued

Biological Resource Surveys

- Wetland delineations and mapping
- Biological resource assessments
- Constraints analysis
- Infrared camera trapping surveys
- Nesting bird surveys
- Habitat surveys
- Species inventory
- Large mammal (deer) migration and movement surveys

Special-status Species Surveys and Reporting

- USFWS 10(a)(1)(a) recovery permits and CDFW MOUs for:
 - California red-legged frog
 - California tiger salamander
 - San Francisco garter snake
 - Vernal pool branchiopods
 - Foothill yellow-legged frog
 - Western burrowing owl

- Protocol bird surveys
 - Burrowing owl
 - Swainson's hawk
 - California spotted owl
 - Northern goshawk
 - Bald eagle
 - Willow flycatcher
- Protocol herpetofaunal surveys
 - California red-legged frog
 - California tiger salamander
 - Foothill yellow-legged frog
 - Sierra Nevada yellow-legged frog
 - Yosemite toad
- Bat surveys
- San Joaquin kit fox surveys
- Vernal pool branchiopod surveys



Environmental Planning and Regulatory Compliance

Sequoia's biologists and planners streamline complex regulations and permitting requirements. We offer a wide range of environmental planning and regulatory solutions including:

- Biological support for CEQA/NEPA compliance
- Mining and reclamation support
- Constraints analysis
- General and specific plan support
- Habitat Conservation Plan (HCP) compliance
- US Fish and Wildlife Service Section 7 consultation support
- Regional Water Quality Control Board Section 401 Water Quality Certification permitting
- California Department of Fish and Wildlife Section 1602 Lake and Streambed Alteration Agreements
- US Army Corps of Engineers Clean Water Act Section 404 permits



Mitigation and Conservation Planning

Sequoia's conservation/mitigation bank development and permit-required resource mitigation implementation services include:

Mitigation Site Assessments

- Identification of conservation/mitigation resources on private lands
- Focused surveys for listed species

Resource Agency Permitting

- USFWS Section 7 and Section 10 permitting
- CDFW 2080.1 and 2081 permitting
- Interagency review team conservation/mitigation bank applications

Long-term Management Plan Development and Monitoring

- Long-term management plan preparation
- Coordination of mitigation requirements with resource agencies
- Implementation of long-term monitoring for species and habitats



Habitat Restoration

Sequoia’s habitat restoration and planning services are rooted in our understanding of the natural world and recognition of the influence of regional geology, geomorphology, hydrology, and climate on a project’s habitat. Ultimately, the natural flora and fauna in a project area are attracted to suitable habitat and onsite resources; through our design and planning, we can create a platform for species restoration, from the soil to the tree canopy. Our services include:

Restoration Planning and Design

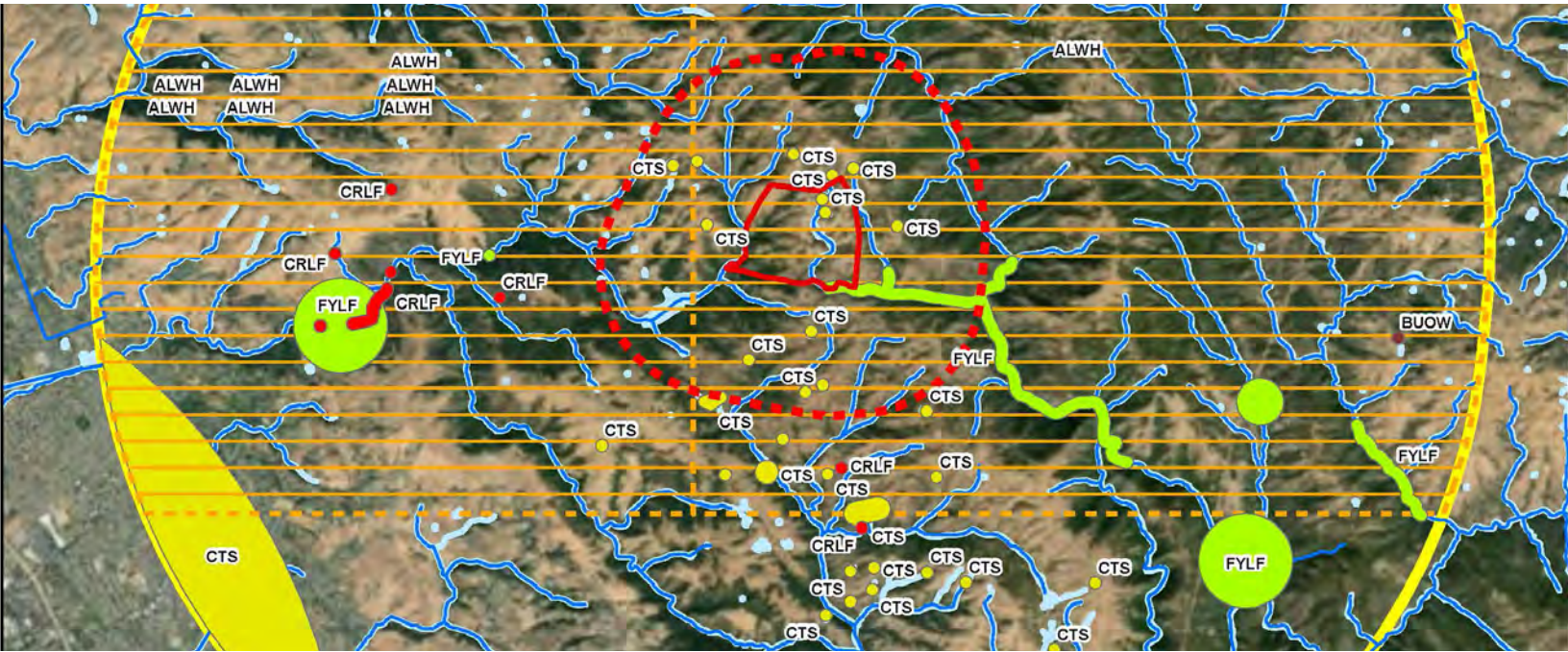
- Revegetation and restoration plans
- Seed sourcing and procurement
- Species-specific planting lists

Restoration Monitoring and Reporting

- Baseline reporting, photo documentation, and long-term reporting
- Compliance monitoring
- Reporting requirements for submittal to agency personnel

Habitat Creation, Design, and Build (Partnership)

- Feasibility assessments
- Conceptual planning and design
- Installation of restoration and mitigation plans
- Landscape monitoring



Geographic Information Systems (GIS)

Our GIS team provides a range of services, from small-scale mapping to program-wide analysis and reporting. Specific services include:

- Data capture and GIS analysis
- Mapping and cartographic services
- Wildlife movement and corridor assessment mapping
- Remote sensing
- Special-status species distribution and habitat suitability analysis
- Drone services
 - Baseline imagery
 - Supplemental data collection
 - Vegetation habitat mapping
 - Project/field compliance before and after photography



Storm Water Services

Sequoia's Qualified Storm Water Pollution Prevention Plan (SWPPP) Developers-Practitioners (QSDs-QSPs) support clients in complying with Clean Water Act (CWA), National Pollutant Discharge Elimination System (NPDES), and State Water Resources Control Board (SWRCB) rules and regulations. Sequoia is highly experienced with regional projects as well as the various agency permits governing work throughout California. We can provide local inspection staff statewide who can be onsite on short notice for storm events, agency meetings, and other time-sensitive storm water needs. Our services include:

- Site inspections and monitoring
- SWPPP training program design and on-site crew training
- On-site storm water collection
- Compliance management



Additional Services

Sequoia offers customized project solutions and minimizes overhead costs by working closely with qualified associates that provide specialized expertise on an as-needed basis. These carefully selected companies and scientists support Sequoia staff in the field and on the desktop, providing expert guidance related to unique species or project requirements, as well as research assistance and peer review. Services that Sequoia can provide in this manner include cultural resources inventories, onsite cultural resources monitoring and support, and archeological assessments.

MANAGEMENT TEAM



Debie Montana, MS
President & Principal
Biologist



Bill Montana
Chief Financial Officer
& Principal



Brett Hanshew, MS
Principal & Senior
Technical Specialist



Tashi MacMillen
Principal & Biological
Services Manager



Jesse Reeb
Senior Biologist &
Project Manager



Amber Anderson, MS
Biologist & Project
Manager



Margaret Finch
Biologist &
Project Manager



Suzanne Brock
Financial Director &
Controller



Molly Ehlers
Business Operations
Manager



Melissa Krause
Marketing Manager



SEQUOIA CULTURE



Sequoia constantly seeks to achieve the ultimate balance between outstanding client service, employee well-being, and financial success. We accomplish this by living our shared core values of **Respect, Excellence, Passion, Integrity,** and **Teamwork**, and celebrating the unique contributions and accomplishments of our team.



Sequoia provides excellent compensation and comprehensive benefits packages including mentoring and career advancement programs, outstanding paid training opportunities, vacation time, and excellent health and dental insurance.



Sequoia also sponsors regular staff events throughout the year. Our company events have included:

- Bocce ball and dinner at Plank Oakland
- Pizza night and doggy play date
- Team-building games
- A's, Giants, and 49ers games
- Holiday parties with white elephant gift exchange
- Wine train through Napa
- Food and clothing drives
- Happy hours



THE SEQUOIA DIFFERENCE

Statewide Multi-regional Expertise. Sequoia staff have worked extensively throughout the state, and our team has considerable experience with local species, habitats, agencies, and regulations.

Experience Implementing Project Regulations from Multiple Agencies. Sequoia frequently conducts biological surveys and monitoring in compliance with the guidelines of multiple agencies, and our surveys and work products are tailored to address the requirements of each.

Extensive Habitat Conservation Plan (HCP) Experience. Sequoia has worked under numerous HCPs including PG&E's San Joaquin Valley and Bay Area HCPs, the draft Solano Multispecies HCP, and the East Contra Costa County HCP.

Competitive Rates. As a result of our low overhead costs, local workforce, cloud-based real-time scheduling, and experienced, cross-trained staff, Sequoia's rates are highly competitive.

Financial Stability. Sequoia is profitable and financially stable, with excellent customer retention levels. Our project managers and accountants utilize widely accepted Oracle financial and project accounting software, enabling them to track project resources in real-time.

Ethics. Sequoia is committed to ethical business practices and has never been involved in any litigation.

Track Record of Success. Sequoia has a history of providing our services on schedule and within budget. Our dedication to client service and project success has resulted in 85% return business from our clients.

Commitment to Client Relationships and Satisfaction. Sequoia is a small firm that delivers agile, customer-focused support. We develop lasting client relationships by providing tailored service that enables us to consistently exceed project goals.



FUELS AND VEGETATION MANAGEMENT PROJECTS



North Orinda Shaded Fuel Break Project

- CONTRA COSTA COUNTY

The North Orinda Shaded Fuel Break Project is constructing a 14-mile long, 1,515-acre fuel break along the northern border of Moraga, Orinda, and Lafayette. Divided into a total of 55 smaller “treatment units”, this project is employing a variety of specific fuel management techniques including understory clearing, tree pruning, brush clearing, chipping, mowing, and select tree removal. Sequoia works closely with fire crews to develop fire prescriptions, as well as permit interpretation and recommendations for communication with USFWS and CDFW. Working in a variety of conditions, Sequoia biologists perform biological monitoring during construction, provide environmental training to fire crews and vegetation removal contractors, and perform habitat assessment surveys and sensitive species surveys.



Kings Mountain Road Fuel Reduction Project at Huddart County Park • SAN MATEO COUNTY

In support of San Mateo County Parks Department’s Kings Mountain Road Fuel Reduction project at Huddart County Park, Sequoia provided a biological monitor to complete rare plant surveys in advance of fuel reduction activities. The project will maintain and improve the existing overstory canopy while reducing or eliminating ladder, dead, and exotic understory fuel. The project crosses several vegetation types including a Redwood/Douglas fir forest, Oak Woodland, and Manzanita Coastal Chapparal. Sequoia’s botanist performed surveys for Kings Mountain manzanita, the primary species of interest, as well as other rare, threatened, and endangered plants with the potential to occur in the project area.



East Bay Regional Park District Fuels Reduction Program Biological Support

- ALAMEDA AND CONTRA COSTA COUNTIES

Sequoia is assisting the East Bay Regional Park District (EBRPD) with implementation of their Wildfire Hazard Reduction and Resource Management Plan. We have been tasked with coordinating communication and monthly update meetings with the District, managing and supervising field activities, performing surveys for special-status species such as pallid manzanita, assessing habitat quality for Alameda whipsnake, identifying signs of infection by phytophthora cinnamomi, and providing biological monitoring services for implementation of Avoidance and Minimization Measures during fuels treatment activities. Sequoia is also assisting with development and implementation of vegetation monitoring pre- and post-treatment.



El Dorado RCD's Fire Adapted 50 Phase IB Wildland Fire Protection Program Project • EL DORADO COUNTY

This State-funded project will implement fuels reduction efforts in high-risk areas that overlap with key infrastructure, private residences, major roadways, and recreation areas. Sequoia is assisting with public outreach and implementation of necessary environmental permits and regulatory compliance. This includes preparation of a Categorical Exemption document and Notice of Exemption in coordination with the CDFW and USFS, development of project plans, and conducting biological and cultural desktop and field assessments to assist in determining priority sites and developing the project Work Plan. Sequoia will perform mapping of the project area, and will conduct pre-construction and protocol surveys. During construction, we will conduct weekly site visits to provide environmental training for crew members, perform sensitive resource surveys, consultat with RCD and its forester, and assess project compliance.

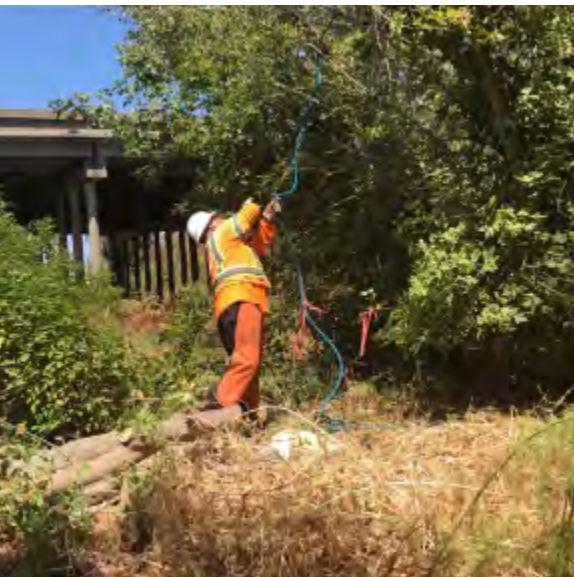


UTILITIES PROJECTS



Pittsburg-Tesla 230-kV Reconductoring & NERC Alert Transmission Upgrades • ALAMEDA & CONTRA COSTA COUNTIES

Sequoia's team of biologists, planners, and project managers supported this 36-mile transmission reconductoring project and PG&E's service-wide safety upgrades to electric transmission lines, providing pre-construction surveys and planning, project management, and biological monitoring that included helicopter and crane work. Because of the project's wide geographical range, Sequoia assisted PG&E with site assessment and mitigation and monitoring to comply with ten different environmental permits including East Contra Costa County's (ECCC's) Habitat Conservation Plan (HCP). We also performed pre-activity surveys for listed species, pre-construction nesting bird surveys, and full-time biological monitoring of golden eagle, bald eagle and other avian species during helicopter work. As a result of Sequoia's effective project management and rigorous QA/QC, all 12 of the site inspections performed by 6 regulatory agencies over the course of the 8-month program resulted in a finding of compliance.



Community Pipeline Safety Initiative (CPSI)

- VARIOUS LOCATIONS

PG&E set out to survey all areas above and around their natural gas transmission pipelines to help ensure immediate access for emergency response crews and prevent damage to the pipeline. This involved removal and replacement of foliage and structures that may obstruct access to gas pipelines. As a subconsultant, Sequoia is providing biological support for project implementation including pre-construction surveys and habitat assessment for California red-legged frog, California tiger salamander, nesting birds, and a multitude of other species across California. We also provide biological monitoring of tree and structure removal activities in environmentally sensitive areas.

Sequoia routinely provides environmental training to crew members; conducts special-status species and nesting bird surveys, and works with crews to keep the projects compliant and running smoothly.



Phillips 66 Line 200 Anomaly Investigation and Repair Project • ALAMEDA & CONTRA COSTA COUNTIES

Sequoia supported the project team on the Line 200 Anomaly Investigation and Repair project along 13 miles of gasline between Brentwood and Altamont. The project involved drill testing, trenching, welding, polymer blasting, coating, and revegetation activities in multiple habitat types. Sequoia provided CDFW- and USFWS-approved biologist support under the East Contra Costa County HCP/Natural Community Conservation Plan (NCCP), and is conducting pre-construction surveys for the numerous special-status species including California red-legged frog, California tiger salamander, western burrowing owl, San Joaquin kit fox, nesting birds, Swainson's hawk, and golden eagle. Sequoia also performed infrared camera surveys at select sites for San Joaquin kit fox, and protocol rare plant surveys across all project area habitats and landscapes. Sequoia provided biological monitoring to support environmental compliance during ground disturbing activities, project management support, and client coordination.



Pipeline Replacement R-349 at San Francisquito Creek • SANTA CLARA COUNTY

Sequoia served as the CDFW-approved biological monitor for salt marsh harvest mouse and California Ridgway's rail on this pipeline replacement project near Palo Alto. Our biologists performed pre-construction surveys for potential sensitive species including California Ridgway's rail, salt marsh harvest mouse, San Francisco garter snake, and western pond turtle. We monitored all pipeline replacement activities, conducted environmental training for crew members about nearby sensitive species and habitats, performed daily site walks and inspected wildlife exclusion fencing, maintained detailed notes of maintenance issues and fencing deficiencies, and coordinated work activities with multiple agencies including PG&E, San Francisquito Creek Joint Powers Authority, CDFW, and USFWS.



UTILITIES PROGRAMS



Hydroelectric Power Generation

- STATEWIDE
- Spring Gap Stanislaus
- Phoenix Project Flow Variance Sampling
- Helms Section 7 Biological Assessment
- Crane Valley Wildlife Crossing Study for License Compliance

Gas Lines

- STATEWIDE
- Community Pipeline Safety Initiative (CPSI)
- Pipeline Replacement Program
- Valve Automation and Valve Repair, Replacement, and Retirement Program
- Pipeline Safety Enhancement Program (PSEP)



Electric Transmission and Distribution

- STATEWIDE
- NERC
- E-Screen Program
- Electric Transmission Wood Pole Replacement Program
- Electrical Transmission Access Road Maintenance (ET-ARM)
- Fulton-Fitch Mountain Reconductoring Project

WATER PROJECTS



Kennedy Meadows Bank Stabilization & Restoration

• TUOLUMNE COUNTY

Sequoia is leading a multidisciplinary team in supporting the planning and permitting process related to restoration of meadow ecosystem function to a section of the Stanislaus River. We conducted site assessments including a wetland delineation, rare plant and noxious weed surveys, a tree inventory, and wildlife surveys, along with surveys for channel cross-section and grazing impacts. Sequoia assisted with project permitting and required state and federal regulatory documentation in support of this project. Sequoia is authoring sections of the Initial Study/Mitigated Negative Declaration (IS/MND) to determine potential significance of project impacts and assisting in the development of Avoidance and Minimization Measures (AMMs) and Best Management Practices (BMPs) to mitigate potential impacts.



Phoenix Project Flow Variance Monitoring and Relicensing Support

• TUOLUMNE COUNTY

As a condition of the FERC license (No. 1061) for the Phoenix Project, minimum instream flows for the South Fork Stanislaus River were established to maintain habitat values for aquatic species. Due to drought conditions, a flow variance monitoring program was developed and implemented to maintain aquatic habitat quality during periods when minimum instream flows could not be attained.

Sequoia performed numerous studies for FERC license compliance including fish population assessments using backpack electrofishing units and block nets to isolate and survey selected reaches of the river; visual encounter surveys for foothill yellow-legged frog on the Middle Fork Stanislaus River over 2 years; fish habitat assessment surveys and stranding potential studies; and water quality monitoring using a handheld multi-parameter constant read water quality sampler.



Stanislaus Afterbay Dam Removal and Revegetation

- TUOLUMNE AND CALAVERAS COUNTIES

The Stanislaus Afterbay Dam was a timber and steel dam built in 1907 along the Middle Fork of the Stanislaus River. After outliving its effectiveness following completion of the New Melones Reservoir in 1982, the dam was removed in 2012. Sequoia assisted in ensuring environmental compliance and restoration goals were met per requirements of federal and state permits. We performed pre-construction surveys for foothill yellow-legged frog, western pond turtle, and nesting birds, and vegetation mapping for planned tree removal. During dam removal activities, Sequoia biologists helped lead the safe relocation of over 2,000 fish to avoid impacts from project activities. Following dam removal, Sequoia botanists and revegetation planners used the onsite survey information to draft the revegetation plan approved by the CDFW, and oversaw replanting at the project site.



Contra Costa Water District Canal Replacement

- CONTRA COSTA COUNTY

The Contra Costa Water District is in Phases 3 and 4 of a project to replace just over 1 mile of unlined drinking water conveyance canal with buried pipeline. Sequoia is providing biological support for project implementation including pre-construction surveys and habitat assessments for California red-legged frog, giant garter snake, burrowing owl, and San Joaquin kit fox. We are also performing biological monitoring to ensure compliance with the Final Mitigated Negative Declaration (MND), USFWS Biological Opinion, and USACE 404, RWQCB 401, and CDFW 1600 and Incidental Take permits. Sequoia personnel coordinate directly with the District as well as contractors to identify potential constraints and work toward field-optimized solutions. Additionally, Sequoia prepares biological compliance documentation for transmittal to the appropriate regulatory agencies.



Kaiser Pond and Shinn Pond Fish Passage Retrofit

- ALAMEDA COUNTY

Sequoia provided biological compliance support for two Alameda County Water District projects in the Alameda Creek drainage. Our team of biologists conducted pre-construction surveys for initial ground disturbance, monitored construction activities to ensure compliance, and performed multiple fish relocations for the project.

The Kaiser Pond project constructed a new diversion pipeline and cylindrical fish screen to replace the prior unscreened diversion. The screen system and diversion intake are used to divert water from the Alameda Creek Flood Control Channel to Kaiser Pond. This project included extensive excavation, horizontal directional drilling, fish relocations, focused species surveys, and implementation of project-specific storm water Best Management Practices.

The Shinn Pond project installed a new 54-inch gravity rediversion pipeline underneath active UPRR and BART tracks. Sequoia ensured compliance with the terms of the CDFW Lake and Streambed Alteration Agreements and the USACE 404 Permit, with a scope of work that covered biological resources, water quality, and erosion control.



MINING & RECLAMATION PROJECTS



Russian River Alexander Valley Instream Mining & Salmonid Habitat Improvements • SONOMA COUNTY

Sequoia provided comprehensive biological services for this planned instream gravel mining project that created off-channel habitat features for listed Chinook salmon and steelhead. Sequoia worked with the client and an independent Scientific Review Committee to ensure geomorphic and habitat studies complied with the various mining and restoration permits. We designed a comprehensive study plan that included pre-construction surveys for special-status wildlife species, salmonid habitat assessment and delineation, and geomorphic studies of salmonid spawning gravels. Sequoia managed a team of subject matter experts to implement various technical studies and surveys for permit compliance including protocol rare plant surveys, tree inventories, salmonid redd counts, bat surveys, western pond turtle and foothill yellow-legged frog surveys, salmonid instream habitat delineations, and salmonid spawning habitat quality surveys.



Napa Quarry Biological Support

• NAPA COUNTY

Sequoia is providing permit compliance services for the expansion of the Napa Quarry. We are performing resource assessment surveys, developing restoration plans for special-status species and oak woodlands, and preparing an invasive species management plan. Specific responsibilities include scheduling and performing floristic-level surveys in the project area, preparing restoration plans for holly-leaved ceanothus and oak woodlands, preparing an invasive species management plan, and coordinating survey and permit needs with the client.



Mission Valley Rock Quarry Compliance Support

- ALAMEDA COUNTY

Mission Valley Rock, an aggregate quarry, is restoring and revegetating a retired quarry pit (“East Nursery Pit”) in accordance with the Conditions of Approval in their surface mining permit. Sequoia is providing compliance support by documenting site conditions and advising the client on how to achieve the success criteria outlined in their Landscaping Plan. Sequoia conducted a fall 2018 survey to document baseline (post-planting) site conditions and authored a revegetation monitoring report for the client to submit to Alameda County. Sequoia will follow up with a spring 2019 site visit to formally assess success criteria.



Graniterock Santa Cruz Sand Plant Revegetation Monitoring

- SANTA CRUZ COUNTY

Sequoia is helping Graniterock achieve reclamation goals as part of the Surface Mining and Reclamation Act (SMARA) requirements for this 104-acre surface quarry by providing revegetation monitoring, performing targeted rare plant surveys, conducting erosion control monitoring, and performing invasive weed inventories. Revegetation monitoring includes qualitative and quantitative monitoring techniques, while erosion control monitoring was performed each year during the wet season. Sequoia also provided adaptive management recommendations including consultation and direction on controlling weedy species, and information on revegetation techniques, native seed collection, and replanting strategies. Sequoia continues to work closely with the reclamation planning team to provide biological consulting services to ensure that project goals are met while protecting biological and fiscal resources.



Lake Herman Quarry Expansion Compliance Monitoring

- SOLANO COUNTY

To ensure compliance with the US Fish and Wildlife Service Biological Opinion, Sequoia provided biological compliance support for the Lake Herman Quarry Expansion project, in habitat occupied by callippe silverspot butterfly and California red-legged frog. We provided long-term management plan species and habitat monitoring that mitigates for unavoidable impacts to these species; conducted monitoring surveys for California red-legged frog, floristic monitoring surveys for callippe silverspot butterfly, and residual dry matter monitoring; and prepared annual monitoring reports. Sequoia is working with the client on an on-call basis to update biological, wetlands, and hydrological technical reports for a pit reclamation, which will ultimately provide off-channel habitat for juvenile salmonids.

MITIGATION PLANNING & BANKING PROJECTS



Private Ranch Long-term Mgmt Plan & Conservation Easement • SANTA CLARA, SAN BENITO, & MERCED COUNTIES

Sequoia is working with the landowner, land trusts, and permittees to establish and manage conservation easements on private land near Gilroy and Hollister as compensatory mitigation for impacts to California tiger salamander, California red-legged frog, and San Joaquin kit fox. Sequoia is conducting aquatic sampling for California tiger salamander and California red-legged frog; coordinating with clients, stakeholders, and resource agencies; performing photodocumentation; monitoring residual dry matter; and preparing annual reports to ensure that conservation goals are met. We have prepared several long-term management plans for easements on the property and developed a draft prospectus to explore the possibility of establishing a conservation bank on the lands. Sequoia is also performing research on California tiger salamander present on the ranch in coordination with academic researchers and wildlife agencies.



Private Ranch Conservation Bank Establishment

• SANTA CLARA COUNTY

Sequoia assisted the property owner in establishing a conservation bank on their 3,354-acre property in Santa Clara County. Sequoia is tasked with all necessary biological surveys to determine absence/presence of listed species within the property. We have developed a phased study plan that is sensitive to the clients' budget and the stage in bank development to ensure that resources are expended at the proper time. Sequoia is also leveraging new technologies such as drone/unmanned aerial vehicle (UAV) imagery, camera trapping, and mapping and environmental DNA sampling (eDNA) for cryptic species to generate baseline information for subsequent analyses.

Sequoia coordinates with the agencies on behalf of the family and drafts all required documents for establishing a conservation bank including a prospectus and bank enabling instrument. Sequoia also prepared a feasibility study to explore market valuation and bank crediting strategies and habitat creation, enhancement, and restoration opportunities.



Fairview Corners Conservation Easement and Long-term Management Plan • SAN BENITO COUNTY

Sequoia is providing biological services related to establishing a conservation easement over California tiger salamander and California red-legged frog upland habitat in Santa Clara and Merced counties as compensatory mitigation for the species. Sequoia has performed habitat suitability assessments, habitat mapping, and focused surveys for these threatened amphibians. Our team has also authored a long-term management plan and baseline conditions report. The project has involved coordination with clients, attorneys, landowners, researchers, and land managers to develop monitoring and mitigation strategies.



Catraio Ranch Long-term Management Plan Implementation • SOLANO COUNTY

The Catraio Ranch Mitigation Project establishes off-site mitigation for unavoidable impacts to California red-legged frog and callippe silverspot butterfly in Solano County. In support of this project, Sequoia designed a monitoring protocol for California red-legged frog, obtained USFWS approval for the protocol, and performed aquatic monitoring and upland habitat/grazing monitoring. We also developed the site-specific residual dry matter monitoring plan to inform grazing management on the active ranch and prepared grazing management prescriptions to improve habitat quality for the two focal species.

Sequoia is currently conducting monitoring surveys for California red-legged frog, managing floristic monitoring surveys for callippe silverspot butterfly, and preparing annual monitoring reports.

CONSERVATION, PARKS, & OPEN SPACE PROJECTS



EBRPD Fuels Management Support

- ALAMEDA AND CONTRA COSTA COUNTIES

Sequoia is assisting the East Bay Regional Park District (EBRPD) with implementation of their Wildfire Hazard Reduction and Resource Management Plan. We have been tasked with coordinating communication and monthly update meetings with the District, managing and supervising field activities, performing surveys for special-status species such as pallid manzanita, assessing habitat quality for Alameda whipsnake, identifying signs of infection by phytophthora cinnamomi, and providing biological monitoring services for implementation of Avoidance and Minimization Measures during fuels treatment activities. Sequoia is also assisting with development and implementation of vegetation monitoring pre- and post-treatment.



Old Haul Road Plant Survey

- SAN MATEO COUNTY

In partnership with San Mateo County Parks Department (SMCP), San Mateo County Resource Conservation District (RCD) prepared to conduct bank stabilization at three failing creek crossings along Old Haul Road within Pescadero Creek County Park. The project plans called for the removal of soils, crib logs, woody debris, and metal culvert pipe at the crossing sites and replacement of failing materials with new engineered culvert crossings. The project areas were located in suitable habitat for multiple special-status plant species as identified in the project's Biological Resources Assessment (BRA). Sequoia's botanist conducted a rare plant survey over multiple visits, appropriately timed for the focal species' blooming periods. Following the surveys, Sequoia produced a data set and a report containing a list of all vascular plants observed onsite and a summary of all surveys conducted.



Mt. Diablo State Park, Juniper Trail Rare Plant Surveys

- CONTRA COSTA COUNTY

Sequoia conducted rare plant surveys to assess and map the presence of special-status species in support of the proposed Juniper Trail reroute project. Surveys included a desktop review of existing literature and previous datasets from the survey area, multiple protocol floristic-level surveys timed during the periods of identifiable phenology for potentially occurring special-status species, and a final report documenting survey results and recommendations. Sequoia's input on this project provided critical planning information for trail routing and reduced potential impacts to special status plant species and mitigation requirements for the project.



Ledson Marsh Spillway Improvement Project at Trione-Annadel State Park • SONOMA COUNTY

California State Parks replaced a concrete spillway and installed an inline water level control structure along the edge of Ledson Marsh within known California red-legged frog aquatic breeding habitat. Sequoia performed biological monitoring and pre-construction surveys for listed species, enforced biological and environmental permit compliance, and provided daily monitoring reports. Sequoia biologists rescued over 30 California red-legged frogs, and completed the project without any take.

TRANSPORTATION & INFRASTRUCTURE PROJECTS



Alhambra Valley Road Safety Improvement Project

- CONTRA COSTA COUNTY

This Caltrans Local Assistance project involved slope stabilization, drainage improvement, and road widening in habitat adjacent to a creek and occupied by Alameda whipsnake, California red-legged frog, and numerous California species of special concern. Sequoia worked with construction management, County representatives, and contractors to ensure compliance with a USFWS Biological Opinion and CDFW Section 1602 Lake and Streambed Alteration Agreement.

As the on-site USFWS-approved biologist for California red-legged frog and Alameda whipsnake, Sequoia assured all work activities were in environmental compliance, conducting daily pre-activity clearance surveys for nesting birds and for federally and state-threatened Alameda whipsnake and federally threatened California red-legged frog, and conducting environmental awareness trainings with on-site personnel.



UC Merced 2020 Project

- MERCED COUNTY

The newest University of California campus, UC Merced, is undergoing an expansion to double its student capacity. Sequoia is working with the design-build contractor to provide biological support services for the project EIS/EIR, USFWS Biological Opinion and its amendments, CDFW ITP and its amendments, and USACE 404 and SWRCB 401 permits. Sequoia developed the environmental training plan and collaborated on the development of an environmental management plan. In addition, our staff performed biological monitoring and surveys for Central Valley sensitive species, conducted reconnaissance-level and daily pre-construction surveys, and coordinated with construction crews and management throughout the project to ensure that all requirements and avoidance and minimization measures were met for each phase and work area. Sequoia also assisted in obtaining additional Section 1600 Streambed Alteration Agreements for the project.



Orwood Road Bridge Replacement

- CONTRA COSTA COUNTY

Contra Costa County Public Works Department's Orwood Road Bridge Replacement project, which was funded by (Federal) Highway Bridge Replacement Funds, Local Road Funds, and East Bay Regional Park District funds, involved the removal of the 70-year-old timber Orwood Road Bridge and the construction of a 42-foot wide replacement bridge in two stages to accommodate existing traffic. Sequoia conducted protocol Swainson's hawk surveys and routine nest start surveys, biological monitoring, and reporting in support of this project.



Solano County Roadway Improvement Projects

- SOLANO COUNTY

Solano County needs to adhere to construction-related requirements to secure NEPA clearance for several federally funded projects, in accordance with Caltrans Local Assistance Procedures and in compliance with the State of California environmental handbooks. Under an on-call contract with the County, Sequoia has provided biological support on a number of active transportation and roadway improvements. This work has included pre-construction surveys for species listed in project biological documents, protocol-level reconnaissance surveys for species of concern and/or endangered species, environmental training for construction staff, and construction monitoring and reporting for species listed in project biological documents and permits.

TESTIMONIALS

“Sequoia’s project managers are sharp, communicative, and thorough. Their biologists are great with the crews, and largely due to their guidance we rarely see compliance issues. They are experts on the species we work with, and leverage their expertise to ensure the least possible risk to them. Any questions and issues that come up with project compliance are communicated promptly and resolved easily.”

One of the most impressive things about Sequoia is that the staff are not there merely to provide a service; staff actively engage in collaborative problem-solving with the client, which has saved my agency money and time. Their staff are highly qualified scientists, but the best kind of scientists – with a keen eye toward communication and customer service. I know that my project manager has my project’s best interests at heart, and I trust her completely.”

Kristen Van Dam, East Bay Regional Park District Resource Analyst/Ecologist

“Sequoia’s biologists provided very helpful biological surveys and project monitoring on many PG&E gas and electric maintenance projects. I could always count on their careful attention to quality and cost while they performed this work in support of both the San Joaquin Valley and Bay Area Habitat Conservation Plans that covered 18 California counties. Sequoia’s management and staff are awesome.”

Mark Dedon, former PG&E Habitat Conservation Plan Administrator

“Sequoia staff were professional, friendly, and flexible, even while working in difficult post-wildfire environments with a variety of challenges. The assessments and survey methodologies paid exceptional attention to detail and the resulting deliverables were top notch.”

California State Parks Natural Resource Program Environmental Scientist

“Sequoia has provided critical support in the planning and implementing vegetation and stream bank restoration projects associated with PG&E’s Spring Gap Stanislaus Hydroelectric Project. They conducted pre-disturbance inventories, developed and implemented revegetation plans, and provided maintenance and monitoring after implementation was complete. Sequoia has been a major player on our team, always communicating in a timely fashion, especially when issues arise, and are always ready to go the extra mile.”

Larry Wise, PG&E Senior Aquatic Biologist



SEQUOIA

Ecological Consulting, Inc.

DANVILLE

Debie Montana
925.855.5500

SACRAMENTO

Brett Hanshaw
530.848.4925

SAN DIEGO

Tashi MacMillen
831.239.1645